

# Brief Profile

January 2012

Going Solar Pty. Ltd.  
The Green Building,  
60 Leicester Street  
Carlton Vic 3053  
+61 (3) 9348 1000  
[www.goingsolar.com.au](http://www.goingsolar.com.au)



## Going Solar - Brief Profile

---

### Introduction

Environmentally Sustainable Design (ESD) is a relatively new field that incorporates nearly all of the existing design and planning disciplines. In the future it will become a standard and integral part of all work by design professionals but at present, ESD is a complex speciality, particularly as new ideas and emerging technologies reach the market place.

To achieve the most from the ESD process it is essential that a specialist ESD consultant is engaged at the earliest possible stage to inform the project as decisions are made and directions are taken. Ideally the ESD consultant would stay with the project until completion to make sure that the ESD objectives are not diluted.

### About Going Solar Pty Ltd

Going Solar was established in 1978 and has considerable experience in ESD including:

- Specialist knowledge of sustainability.
- An ability to accelerate the uptake of sustainability by working co-operatively with other organisations.
- Project management.

Going Solar has specific areas of expertise and is also able to offer constructive input across a broad frontier of sustainability concepts.

Going Solar works co-operatively in conjunction with other consultants in the specialist fields of urban design, built form, landscaping, renewable energy, energy efficiency, water efficiency, healthy buildings, sustainable tourism and sustainable transport. We diligently track and assess new and innovative technologies.



### Previous Experience

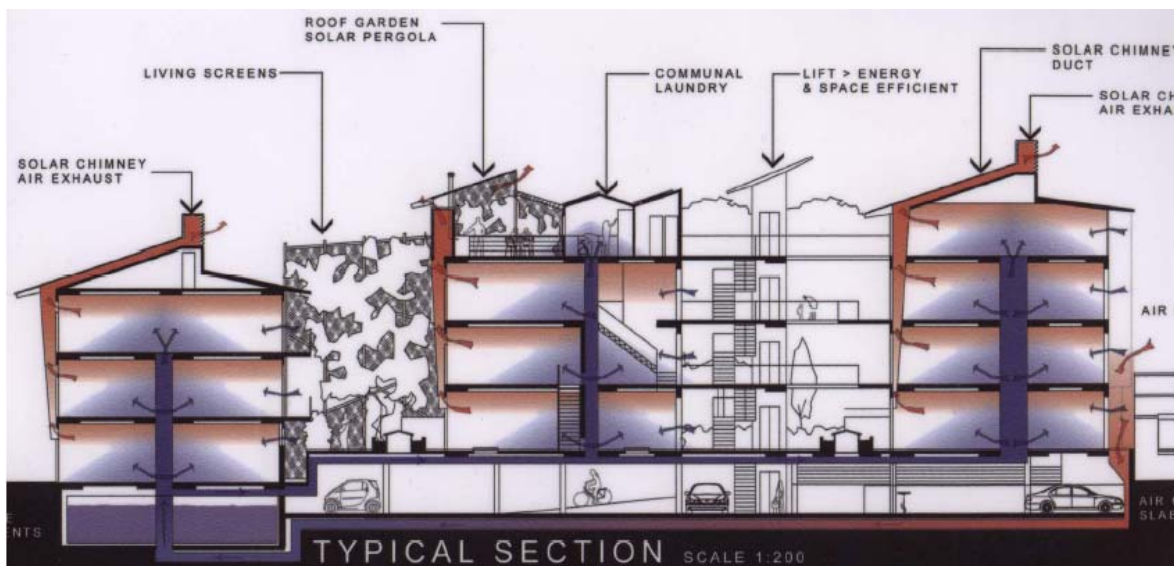
- **City of Casey** –
  - Investigation of renewable energy and sustainable options for Myuna Farm.
  - ESD initiatives for 795 ha West Cranbourne Urban Development.
- **Cardinia Shire** –
  - ESD options for a Business Park.
  - Development of Sustainable Building Guidelines.
- **City of Boroondara** – ESD Technical Report for West Hawthorn Urban Design Framework.
- **Wellington Shire** – ESD options for Sale Aquatic Centre.
- **Moyne Shire** – ESD Options for Council Office.
- **City of Yarra** – Water conservation feasibility study.
- **Bayside Council** – Green office program.
- **Shire of Yarra Ranges** –
  - ESD options for community building.
  - Assist in preparation of Design Guidelines.
  - ESD advice for urban design review of Monbulk and Montrose.
  - Sustainable transport advice for Lilydale-Healesville Corridor.
- **Mildura Rural City Council** – ESD options for:
  - Storm Water Basins
  - Library/Tourist/Café/Aquatic Centre complex.
  - Waste Recycling Centre.
- **City of Melbourne** –
  - ESD options for sports pavilions.
  - Preparation of Solar Hot Water Case Studies.
  - Sustainable Living in the City - Program Delivery.
  - ESD options for Urban Camp
  - PV design/install for Art Play, Urban Camp & Venny Adventure Playground.
- **Moorabool Shire Council** – Energy audits for Ballan and Bacchus Marsh offices to help reach the CCP Milestone\* commitments.
- **Bayside Council** – Green office program.
- **Department of Justice** –
  - Design/install GIPV system for Beechworth Prison – 38kWp.
  - Design/install GIPV system for Dhurringile Prison – 25kWp.
- **Department of Sustainability and Environment (DSE)**
  - Web-based Sustainability Kit for Business and Government Facility Managers.
  - Refinement of the DSE cleaning contracts to make them as ‘green’ as practicable.
- **Industry Fund Services** – Sustainable office program.
- **Yarra Valley Water** – Help in delivery of their 2006-09 Mitcham green office strategy.
- **Delfin Lend Lease** –
  - ESD advice for town centre at Caroline Springs (600 dwellings).
  - Sustainable Transport Options for Urban Fringe Developments.
- **Gore Street, Fitzroy** – Review of SHW for 66 apartments
- **WestWyck Village, Brunswick** – Evaluation of energy initiatives.
- **Pentridge Village, Coburg** – ESD Advice.

---

\* CCP – Cities for Climate Protection

## Going Solar - Brief Profile

- **40 Albert Road**, South Melbourne – Design, supply and installation of rooftop PV Solar Pergola. (Award Winning Project).
- **50 Lonsdale Street**, Melbourne – Design, supply and installation of rooftop 4kWp PV System. This building houses DHS and Sustainability Victoria.
- **Harrison Street**, Brunswick – ESD evaluation and report on 35 apartments.
- **812 Elgar Road**, Doncaster – 100 Apartments – Consultation: ESD initiatives and representation before the Manningham Council Design Task Force.
- **Butterfly House Display Home**, Murrumbeena – Design/install GIPV system.
- **ANZ Bank**, Tullamarine – Design/install GIPV system (photo on front cover).
- **Greek Orthodox Church**, Donvale – ESD initiatives for a multi-purpose sports and event building.
- **Ballarat Grammar School** – Science Centre – Design/install of GIPV SHW systems.
- **Ballarat University** – Building Integrated PV System for the Building & Construction Training Centre. (Award Winning Project).
- **Pascoe Vale Girls' College** - Design and installation of GI PV and foyer display.
- **Roxborough College** – Design and installation of GI PV system.
- **Fitzroy Community School** - PV GI system design and installation.
- **Lumen Christi Primary School**, Churchill, Latrobe Valley – Advice on innovative solar technologies. (Sustainability Victoria Case Study).
- **Swinburne Centre for Sustainability**, Wantirna – Design/installation of PV system.
- **NMIT**, Epping Campus – Design/installation of PV and SHW systems.
- **Box Hill TAFE**, Box Hill – Design/installation of PV UPS system (Award Winning).
- **Kangan Bateman TAFE**, Docklands – Design/installation of 22 kWp PV system.
- **Monash University**, Clayton and Berwick – Design of large 46 kWp PV systems.
- **MLC Marshmead**, Mallacoota – Hybrid Solar Hot Water System. (Award Winning).
- **Tulla-Calder Interchange** – 500 metre Solar Sound Wall. (Award Winning Project).
- **M80 (Western Ring Road)** – Design of 48kWp Solar Barrier Project. (Install pending).



Going Solar  
The Green Building  
60 Leicester St  
Carlton 3053  
+61 (3) 9348 1000  
[steve@goingsolar.com.au](mailto:steve@goingsolar.com.au)  
[www.goingsolar.com.au](http://www.goingsolar.com.au)

## Going Solar - Brief Profile

---

### Awards

Going Solar has received the following awards for design and installation of our systems:

**2006 – The Solar Pergola in South Melbourne – BCSE Award for Excellence**

**2007 – Ballarat University PV Building Façade – BCSE Award for Excellence**

**2008 – Domestic PV System at Williamstown – CEC Award for Excellence**

**2008 – PV Sound Barrier on the Tulla-Calder Interchange – CEC Award for Excellence**

**2009 – Domestic Solar Hot Water System at Riddles Creek – CEC Award for Excellence**

**2009 – PV System (less than 5kWp) at Taylors Lakes – CEC Award for Excellence**

**2009 – PV System (5kW-20kWp) at Tecoma – CEC Award for Excellence**

**2011 – Commercial Solar Hot Water System, Mallacoota – CEC Award for Excellence**

**2011 – PV-UPS System (less than 10kWp) at Box Hill – CEC Award for Excellence**

Note: These are the top industry awards. The Business Council for Sustainable Energy (BCSE) is now the Clean Energy Council (CEC). PV = Photovoltaic. UPS = Uninterrupted Power Supply



## Going Solar - Brief Profile

---

### Schedule of Rates effective from August 15, 2011

	<b>Hourly</b>	<b>Daily</b>
Principal ESD Projects Consultant	\$240	\$1920
Senior ESD Projects Consultant	\$220	\$1760
ESD Projects Consultant	\$200	\$1600
Sustainable House Consultant	\$160	\$1280
ESD Project Manager	\$150	\$1200
Specialist ESD Services Consultant	\$150	\$1200
Green Environment Consultant	\$150	\$1200
Accredited Installation Supervisor	\$120	\$960
Accredited Installer	\$90	\$720
Skilled Trade Assistant	\$70	\$560

Rates subject to change. Rates are exclusive of GST

### Additional Fees effective from August 1, 2011

Assume:

Train/Car Travel (within Victoria, per day, per round trip)	From \$100
Accommodation (Country Victoria - if evening meeting required, per person, per night)	\$90
Air Travel (Intrastate/Interstate/Overseas, per person)	At cost
Accommodation (Capital City, per person, per night)	\$125
Evening Meal (per person)	\$35
Black & White Perspective Sketches	From \$400
Colour Sketches	From \$700
Schematic Drawings (A4)	From \$350
B & W Printing & Binding of Report (beyond two copies)	From \$10
Colour Printing & Binding of Report (per copy)	From \$75

Rates subject to change. Travel time at the rates listed in the top table. Rates are exclusive of GST

### Trading Terms

30 Days from Invoice Date

### Going Solar OH&S Statement

1. **Policy** – See below FG67
2. **Programs as appropriate** -
  - i. Working at Height Certificate
  - ii. Industrial Rope Access Certificate
  - iii. White Card (OH&S Certification)
3. **Management & Reporting of OH&S Matters** – Manual established
4. **OH&S Representative** – Joanna Bradley, Going Solar



GS Contractors with safety harnesses

### Going Solar Work Place OH&S Policy

**FG67**

Going Solar has an obligation under the Workplace Health & Safety Act 1995 to ensure the workplace health and safety of each of its employees, and to ensure that other persons (such as visitors and contractors) are not exposed to risks to their health and safety arising out of Going Solar's activities.

Going Solar recognises the importance of a healthy and safe work place, the protection and productivity of its stakeholders, and as a principle of business sustainability.

The Occupational Health and Safety Policy apply to all staff, contractors and visitors and work places of Going Solar. Ultimately, the General Manager has responsibility for the safety of these people. Divisional Managers are responsible for implementing the Occupational Health and Safety Manual and ensuring adherence to the standards by others in that division.

The Occupational Health and Safety Manual is included as part of this policy. The Manual includes incident report forms, safety procedures, hazard analysis procedures and forms and information on what to do in case of an accident.

### Going Solar Environmental Management System (EMS) Statement

Going Solar's Environmental Management System involves its employees in the company's commitment to leadership in environmental affairs. Its structure and programs are designed to integrate environmental considerations throughout the company's operations.

At Going Solar we continually strive to improve the environmental aspects of our operations and activities.

Paper use by staff, the consumption of electricity in our office, the generation of office waste and the use and operation of motor vehicles, are all targets for improvement. In 2001, Going Solar moved its primary operations into the 60L Green Building, one of the most environmentally friendly buildings in Melbourne.



Our strict EMS policies include the following:

- Purchase of 100% green electricity;
- 100% purchase and use of recycled paper;
- Collection and use of rainwater in our offices;
- Reduced energy consumption by moving our office to a building with higher energy efficiency;
- Reduced paper consumption through initiatives such as dual and multi page printing;
- Separate collection of recyclables and compostable waste in our office;
- Use of composting bins for compostable waste in our office;
- Use of energy efficiency lighting and other appliances;
- Staff are encouraged to walk or cycle where possible, and to reduce the use of motor vehicles.

Our activities and operations are continually under review to ensure that our EMS policies and strategies in place are being adhered to. As promoters of renewable energy and sustainable living, Going Solar and its employees are advocates of an energy efficient and environmentally friendly way of life.

### Stephen Ingrouille – Short Bio

Stephen Ingrouille has been working in the sustainability field for over thirty-five years. He is the principal of Going Solar Pty Ltd, a leading Australian based renewable firm established in 1978.

In 2004, Stephen was a finalist in two categories of the Banksia Environmental Awards: *Australians Working for a Sustainable Future* and the *Prime Minister's Environmentalist of the Year*. In August 2006 he won the *Melbourne Award* which recognised thirty years of *Contribution to Environment*.



Throughout November 2006 Stephen delivered a series of workshop presentations on sustainable buildings and renewable energy on the West Coast of North America. While travelling, he investigated the local sustainable transport systems and infrastructure in Vancouver, Seattle, Portland, and San Francisco.

In recent years, Stephen has been focussing on the sustainable design of our urban and regional spaces (incorporating urban design, sustainable buildings, transport, tourism and renewable energy). In 2007 he prepared a report for the Shire of Yarra Ranges and the State Government on the possibility of reopening the Lilydale – Healesville railway and running a tram-train on that line from solar power.

In 2007 he visited Sri Lanka and, as part of the post-tsunami reconstruction effort, prepared a report recommending the use of trams for the new regional capital of Hambantota. That recommendation was accepted and the tramway corridor has been reserved on the city plan.

In 2009 Stephen was a speaker at the APEC Sustainable Transport and Land Planning Conference in Singapore. He has been a guest speaker at many other events including a Parking Industry Seminar in Melbourne. Also in 2009 he prepared a report – *Making the Bay Connect* – on the options for, and economic advantages of, waterborne transport (ferries) on Port Phillip Bay, Melbourne.

In 2010 he revisited Sri Lanka, and also Thailand, to investigate the progress in adoption of the *Bangkok Declaration* – the blueprint for sustainable cities in Asia. Stephen has written a report on transport in Thailand (with reference to the *Bangkok Declaration*).

In 2011 he visited New York, England, Ireland and Montserrat looking at sustainable transport, building, tourism and urban design initiatives. At the end of 2011 Stephen delivered a second substantial report on the operation of ferries on Port Phillip Bay.

Stephen publishes a weekly email newsletter on sustainable cities and transport that received a commendation in the *2008 Victorian Planning Industry Awards*. He also serves on a number of advisory committees and is a judge on the Melbourne Awards.