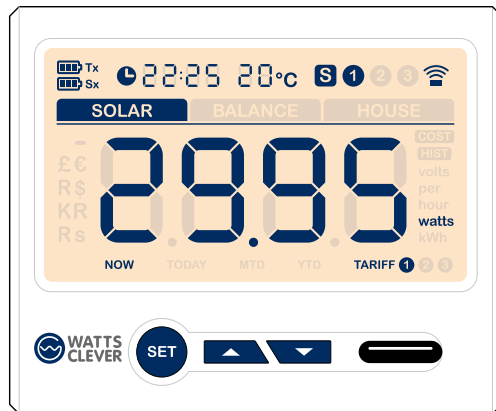




Making it easy to save energy
MONITOR CONTROL SAVE



WIRELESS Solar Energy Monitor

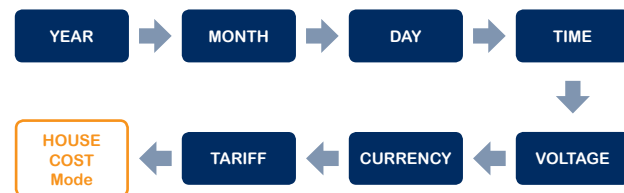
Monitor household electricity use

Quick Guide

EW4009

Setting Mode

The sequence in the Setting Mode as below:



In each mode:

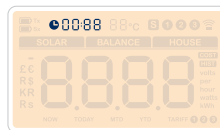
- Press to confirm.
- Press to scroll up, press to scroll down.
- When complete each mode, press to confirm and go to next mode as above sequence or press to reset again.

* When you complete the Setup of TARIFF1, then will go to Setup of TARIFF2, Setup of TARIFF3 & Setup of Solar TARIFF.

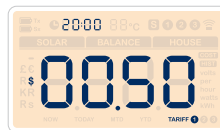
Setup for the YEAR



Setup for the TIME



Setup for the TARIFF



Setup for the MONTH



Setup for the VOLTAGE



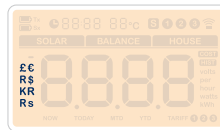
Setup for the Solar TARIFF



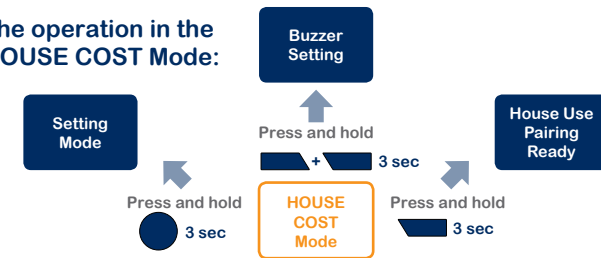
Setup for the DAY



Setup for the CURRENCY



The operation in the HOUSE COST Mode:



Pairing for entire house use

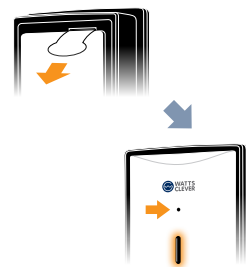
Step 1 • Prepare for Energy Monitor



In the HOUSE COST Mode:

- Press and hold 3 seconds until the antenna icon is flashing.
- Now the Energy Monitor is ready for pairing.

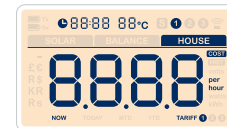
Step 2 • Prepare for Power Transmitter



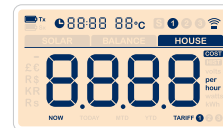
- Pull out the clear plastic tab from the back of the Power Transmitter.
- Use a slim stick to push into the pairing hole of the Power Transmitter and hold it there until the LED light of the Power Transmitter flashes.
- When the pairing is successfully finished, the antenna icon stops flashing and stays on the top right corner of the LCD screen.
- The paired LCD screen will return to the HOUSE COST Mode.

The pairing may take up to 60 seconds.

If the pairing can't be finished successfully within one minute, the LCD screen will return to unpaired HOUSE COST Mode.



HOUSE COST Mode (unpaired) ✗



HOUSE COST Mode (paired) ○

The operation in the SOLAR ENERGY Mode:



Pairing for Solar System use

Step 1 • Prepare for Energy Monitor



In the SOLAR ENERGY Mode:

- Press and hold 3 seconds until the antenna icon is flashing.
- Now the Energy Monitor is ready for pairing.

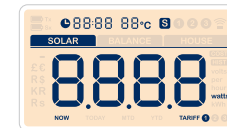
Step 3 • Prepare for Power Transmitter



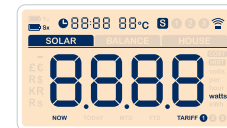
- Pull out the clear plastic tab from the back of the Power Transmitter.
- Use a slim stick to push into the pairing hole of the Power Transmitter and hold it there until the LED light of the Power Transmitter flashes.
- When the pairing is successfully finished, the antenna icon stops flashing and stays on the top right corner of the LCD screen.
- The paired LCD screen will return to the HOUSE COST Mode.

The pairing may take up to 60 seconds.

If the pairing can't be finished successfully within one minute, the LCD screen will return to unpaired HOUSE COST Mode.

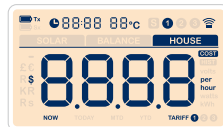


HOUSE COST Mode (unpaired) ✗



HOUSE COST Mode (paired) ○

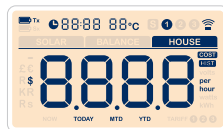
HOUSE COST Mode



- Press **▲** or **▼** to select the channel in **HOUSE COST Mode**.

After 10 seconds idleness on each channel display will return the LCD screen to **HOUSE COST Mode**.

HOUSE COST History Mode

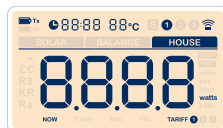


- Press and hold **▲** 3 seconds to entre the **HOUSE COST History Mode**.

Cost data of a specific day

- Press and hold **▲** 3 seconds until the display entres into the history date input interface.
- Press **●** to confirm the value.
- Press **▲** & **▼** to scroll up & down.
- When you complete this setting, press **▲** to confirm & display the money spent for the selected date.

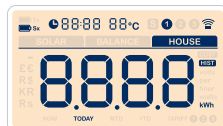
HOUSE ENERGY Mode



- Press **▲** or **▼** to select the channel in **HOUSE COST Mode**.

After 10 seconds idleness on each channel display will return the LCD screen to **HOUSE COST Mode**.

HOUSE ENERGY History Mode

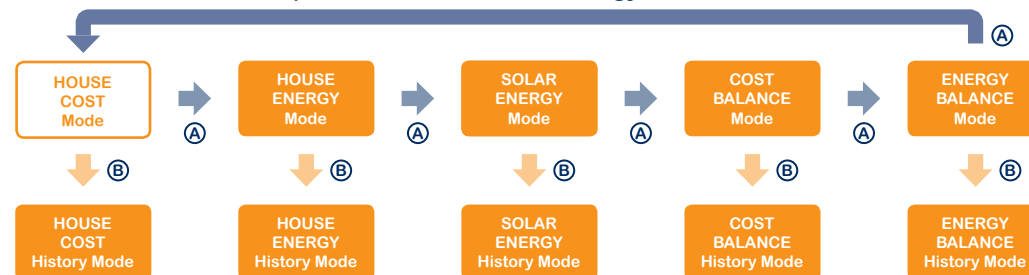


- Press and hold **▲** 3 seconds to entre the **HOUSE ENERGY History Mode**.

Energy consumption data of a specific day

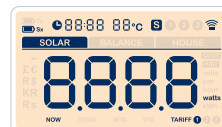
- Press and hold **▲** 3 seconds until the display entres into the history date input interface.
- Press **●** to confirm the value.
- Press **▲** & **▼** to scroll up & down.
- When you complete this setting, press **▲** to confirm & display the electricity spent for the selected date.

The operation in 10 Mode of Energy Monitor:



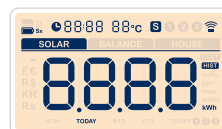
- (A) Press **●** once to select the mode in sequence as figure.
- (B) Press and hold **▲** 3 seconds to select the mode as figure.

SOLAR ENERGY Mode



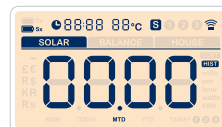
- Press and hold **▲** 3 seconds to entre the **SOLAR ENERGY History Mode**.

SOLAR ENERGY History Mode



- Press and hold **▲** 3 seconds until the display entres into the history date input interface.

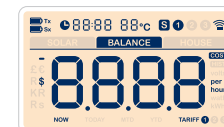
History data of solar electricity output of a specific day



- Press **●** to confirm the value.
- Press **▲** to scroll up, press **▼** to scroll down.
- When you complete this setting, press **▲** to confirm & display the electricity produced by solar for the selected date.

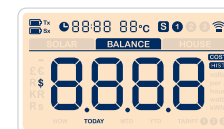
After 30 seconds idleness on this Mode will return the LCD screen to **HOUSE COST Mode**.

COST BALANCE Mode



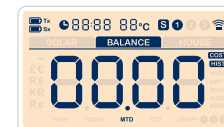
- Press and hold **▲** 3 seconds to entre the **COST BALANCE History Mode**.

COST BALANCE History Mode



- Press and hold **▲** 3 seconds until the display entres into the history date input interface.

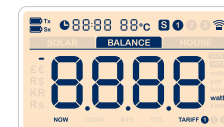
Balance of energy cost of a specific day



- Press **●** to confirm the value.
- Press **▲** to scroll up, press **▼** to scroll down.
- When you complete this setting, press **▲** to confirm & display the balance of energy cost for the selected date.

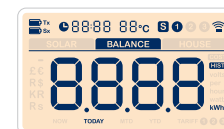
After 30 seconds idleness on this Mode will return the LCD screen to **HOUSE COST Mode**.

ENERGY BALANCE Mode



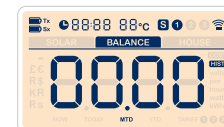
- Press and hold **▲** 3 seconds to entre the **ENERGY BALANCE History Mode**.

ENERGY BALANCE History Mode



- Press and hold **▲** 3 seconds until the display entres into the history date input interface.

Balance of electricity energy of a specific day



- Press **●** to confirm the value.
- Press **▲** to scroll up, press **▼** to scroll down.
- When you complete this setting, press **▲** to confirm & display the balance of electricity energy for the selected date.

After 30 seconds idleness on this Mode will return the LCD screen to **HOUSE COST Mode**.